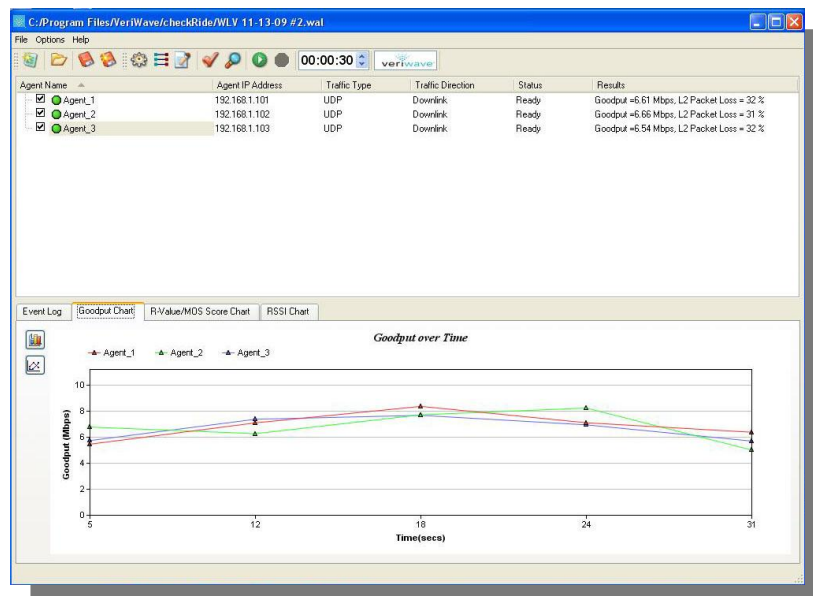
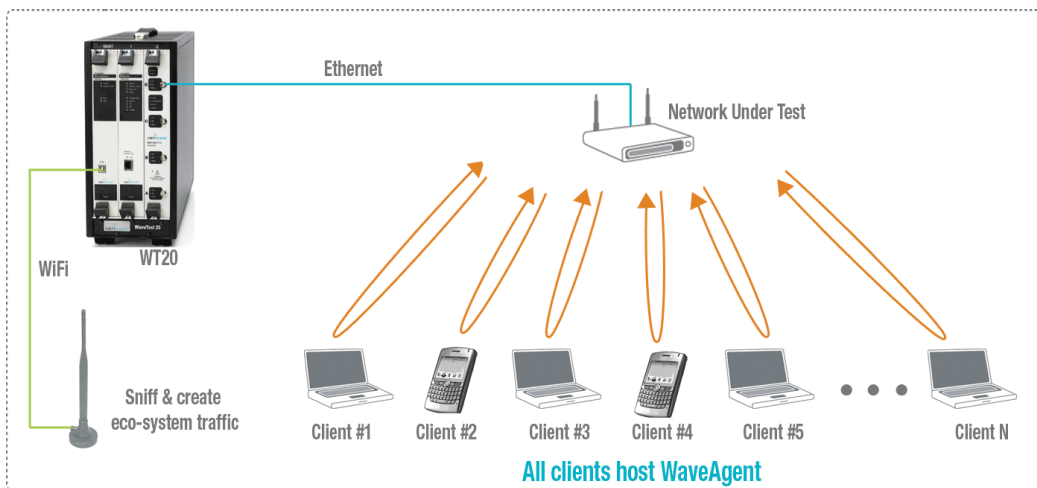


WaveInsite™ – Rapid Interoperability and Performance Testing

WaveInsite - is the fastest way to conduct “over the air” WiFi interoperability & performance testing between WiFi Access Points and multiple real client devices. With WaveInsite, testers can configure, automate and repeat a series of tests within minutes, measuring speed, throughput, goodput, loss, scalability, voice quality and vendor/device interoperability.

For Systems Integrators & end-users: WaveInsite is the fastest and most precise means for selecting WiFi vendors, designing and deploying networks for optimal performance, certifying new networks, and certifying WiFi devices.

For WiFi device and infrastructure manufacturers: WaveInsite significantly reduces the time and cost of interoperability and performance testing during development and QA.



Benefits

- Enables rapid Over the Air (OTA) testing with real client devices such as laptops, mobile phones, scanners, patient monitors, etc.
- Setup and run tests in less than 5 minutes
- Real time and overtime results
- Quickly and easily conduct “what if” interoperability tests between various client devices and Access Points
- Quickly identify and pinpoint potential problems
- Compare results against pre-set SLAs

Tests Configuration, Results and Metrics:

TEST CONFIGURATION:

- Single-page dashboard – 5 clicks or less to start test
- Results are measured and collected using WaveAgent; one WaveAgent installed on each client participating in test (laptop, Smartphone, etc.)
- Seamless integration with VeriWave’s WiFi traffic analysis blades to “sniff” the air and quickly determine the root-cause of less than expected performance
- Seamless integration with VeriWave’s traffic-generation capabilities to create eco-system traffic and test the behavior of real clients under high-load traffic conditions
- Set pass/fail performance criteria for each client device

TEST RESULTS

- UDP throughput, TCP Goodput, Loss
- Voice MOS and R-Value
- Mobile client measured RSSI
- Automatic generation of a simple-to-read PDF report after each test
- Automatic comparison of test results against user pre-set Service Level Agreements (SLAs) to gauge end-user satisfaction

