



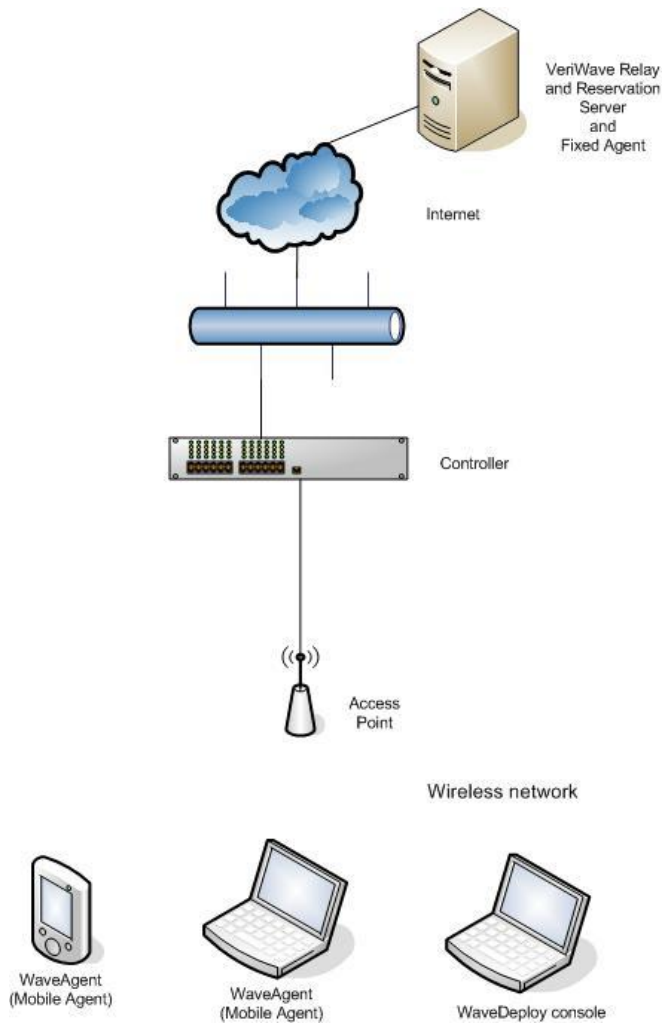
Hotspot Mode with WaveDeploy

Lifecycle Test Solutions for Business-Critical WLANs

VeriWave Inc.
8770 SW Nimbus Ave.
Beaverton, OR 97008
<http://www.veriwave.com>
Tel: (503) 473-8340
Fax: (503) 473-8351
Version 1
July 2011

INTRODUCTION

In order to use WaveDeploy in hotspot mode there needs to be Relay and Reservation Server running on the fixed agent. This can be done by checking a few boxes from within the WaveAgent program. This instance of WaveAgent runs on a computer wired into the internet side of the network. This agent then connects up to all of the mobile agents on the WLAN. The following instructions walk through the setup.

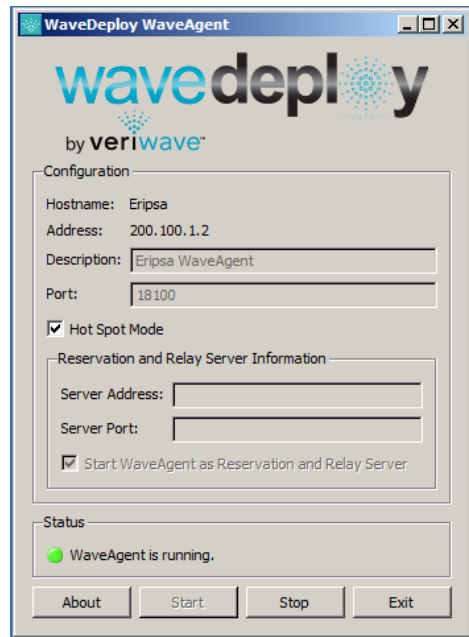


The Hot spot mode set up can be broken down into a three part process.

- Part 1 - set up the fixed agent as a reservation and relay server
- Part 2 - set up the mobile agents in hotspot mode
- Part 3 - set up from within the WaveDeploy application

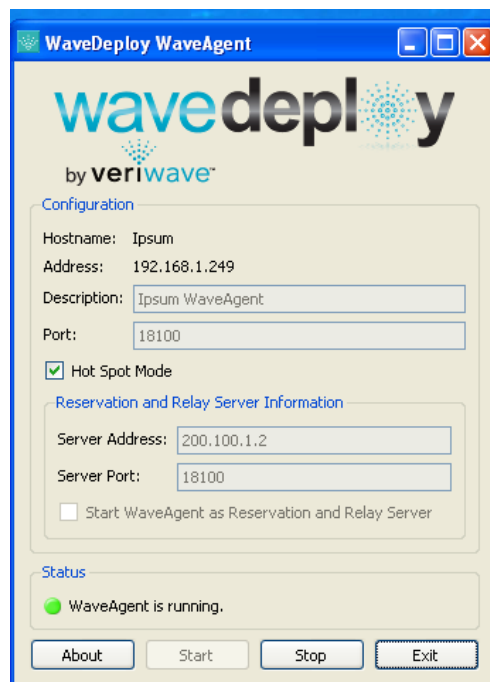
PART 1

The first thing that needs to be done is to set up the reservation and relay server. On your fixed agent that is wired into the back end of the network, launch WaveAgent. Check hotspot mode. Also check “Start WaveAgent as a Reservation and Relay Server”. Then click the start button.



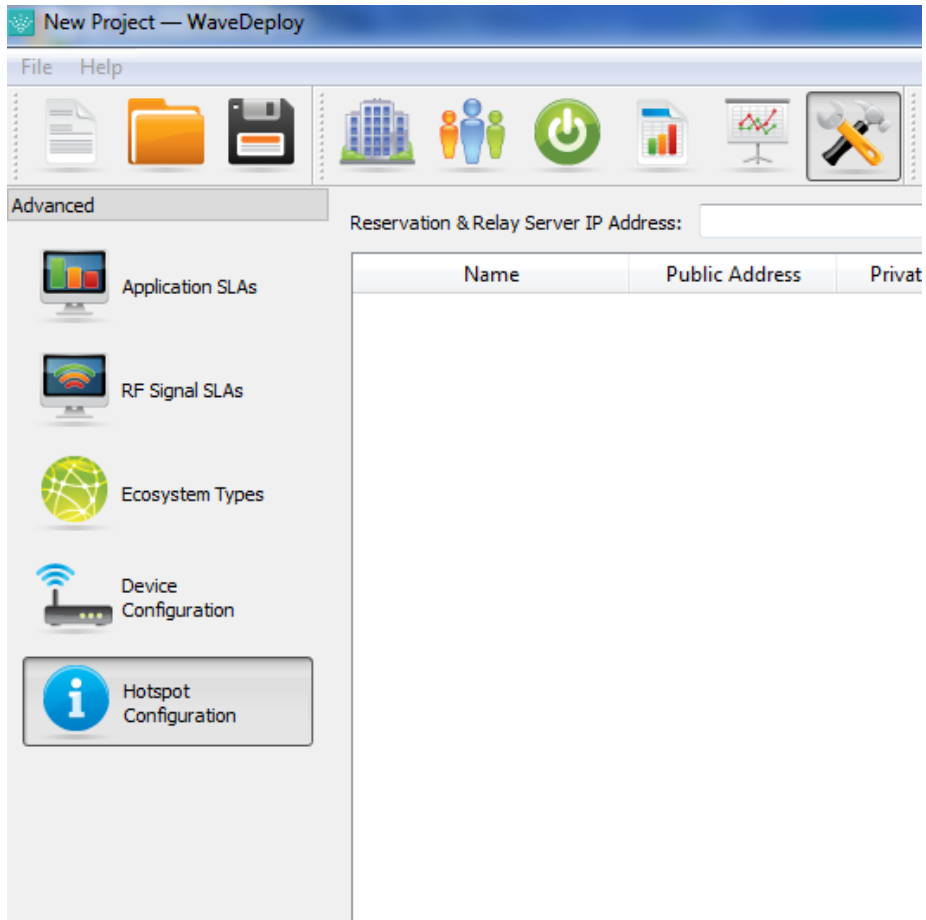
PART 2

Now configure the mobile agents that are going to be used in hotspot mode. First connect the mobile agent to the particular SSID to be used. Then open up a browser to authenticate past the webauth page, if there is one. Launch WaveAgent and check Hot Spot Mode. Enter in the IP and port of the Reservation and Relay server (from part 1). Then click the “Start” button.

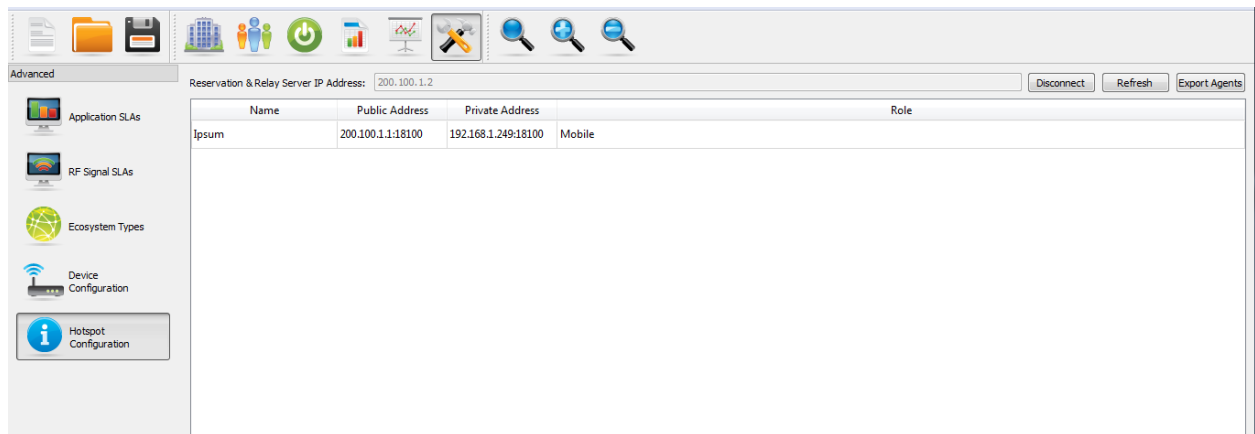


PART 2

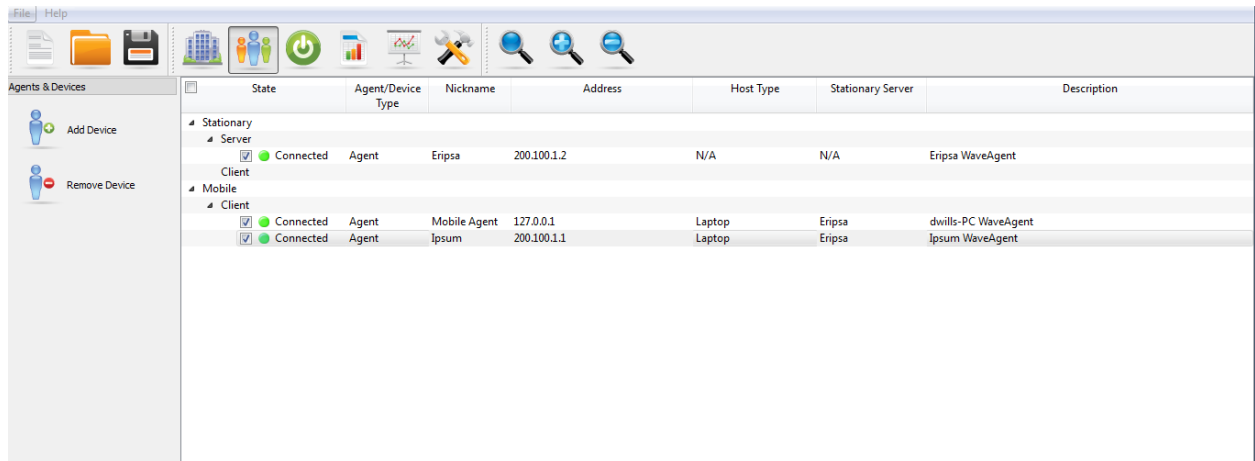
Now open up WaveDeploy. Click the advanced button (hammer and wrench button). Then click the Hotspot Configuration button.



Type the IP address of the Reservation & Relay server and click connect. You should see the mobile agent devices that were already registered with the Reservation & Relay server. Then click export agents. This will pull these devices into the agents and devices page with the correct IP address.



In the agents and devices page, make sure that you connect up the stationary server first. You will have to enter in the IP address of the server. Connect up the server and then connect up the other devices. You are now able to run an assessment as before.



The screenshot shows the 'Agents & Devices' window in WaveDeploy. The interface includes a menu bar (File, Help), a toolbar with various icons, and a sidebar with 'Add Device' and 'Remove Device' buttons. The main area is a table listing connected agents, categorized into Stationary and Mobile.

State	Agent/Device Type	Nickname	Address	Host Type	Stationary Server	Description	
Stationary							
Server							
<input checked="" type="checkbox"/>	Connected	Agent	Eripsa	200.100.1.2	N/A	Eripsa WaveAgent	
Mobile							
Client							
<input checked="" type="checkbox"/>	Connected	Agent	Mobile Agent	127.0.0.1	Laptop	Eripsa	dwills-PC WaveAgent
<input checked="" type="checkbox"/>	Connected	Agent	Ipsum	200.100.1.1	Laptop	Eripsa	Ipsum WaveAgent