



Technical Summary of VeriWave Enclosure Systems

Interface Summary

Product or Kit	Intended Use	DB9 (10/100 Mbit Ethernet and POE Capable)	DB15 (for Video)	RJ45: 10/100/1000 Mbit Ethernet and POE	SMA F-F Bulkhead	USB 2.0 B-A	Red Banana Jack (Low voltage DC only)	Black Banana Jack (Low voltage DC only)	4-terminal power connection (AC or DC)	6-terminal power connection (AC or DC)	Ventilation Fan
WCH1000	House a single legacy normal-size Access Point	2			2				1		1
WCH1100	Houses a single outdoor (large) legacy Access Point	5			5					1	1
WCH2000	Houses a single, dual-radio 802.11n Access Point	1		4	8		1	1			1

Product or Kit	Intended Use	DB9 (10/100 Mbit Ethernet and POE Capable)	DB15 (for Video)	RJ45: 10/100/1000 Mbit Ethernet and POE	SMA F-F Bulkhead	USB 2.0 B-A	Red Banana Jack (Low voltage DC only)	Black Banana Jack (Low voltage DC only)	4-terminal power connection (AC or DC)	6-terminal power connection (AC or DC)	Ventilation Fan
WCH2100	Two WCH2000's joined together, with slide mounts for 19" rack										
WCH3600-S	For 8 dual-radio 802.11n Access Points, SMA connectors	2		8	16		2	2			2
WCH3600-T	For 8 dual-radio 802.11n Access Points, TNC connectors	2		8	16		2	2			2

Cable and Adapter Summary

Product or Kit	Included Cables	Included Antennas	Included Adapters
WCH1000	<ul style="list-style-type: none"> 1 - Ethernet, 36" STP Cat 5e 2 - RF cable, SMA, 12" 	2 - Dual band Omni-directional SMA	<ul style="list-style-type: none"> 2 - Coupler, SMA 2 - RJ-45 to DB-9
WCH1100	<ul style="list-style-type: none"> 2 - Ethernet, 36" STP Cat 5e 5 - RF Cable, SMA 12" 	2 - Dual band Omni-directional SMA	<ul style="list-style-type: none"> 2 - Coupler, SMA 2 - RJ-45 to DB-9
WCH2000	<ul style="list-style-type: none"> 1 - Ethernet, 36" STP Cat 5e 8 - RF Cable, SMA 24" 	3 - Dual band Omni-directional SMA	<ul style="list-style-type: none"> 3 - Coupler, SMA 2 - Double Binding Post (DC connectors) to Banana Plug Adapter
WCH2100	<ul style="list-style-type: none"> 2 - Ethernet, 36" STP Cat 5e 16 - RF Cable, SMA 24" 	6 - Dual band Omni-directional SMA	<ul style="list-style-type: none"> 6 - Coupler, SMA 4 - Double Binding Post (DC connectors) to Banana Plug Adapter
WCH3600-S	<ul style="list-style-type: none"> 8 - Ethernet, 36" STP Cat 5e 8 - RF Cable, SMA 24" 		<ul style="list-style-type: none"> 24 - Adapter, Reverse SMA to SMA 2 - Banana plugs (DC connectors) with binding posts 16 - Terminator Caps
WCH3600-T	<ul style="list-style-type: none"> 8 - Ethernet, 36" STP Cat 5e 8 - RF Cable, SMA 24" 		<ul style="list-style-type: none"> 24 - Adapter, Reverse TNC to TNC 2 - Banana plugs (DC connectors) with binding posts 16 - Terminator Caps

Electrical Specifications for Connection Interfaces:

- All DB-9 and DB-15 connector interfaces rated for 60 VDC at 1 Amp.
- All Banana Jack connector interfaces rated for 60 VDC at 5 Amps.
- 4-terminal and 6-terminal power connections rated for 60 VDC at 5 Amps, 110 VAC at 5 Amps, or 220 VAC at 5 Amps.

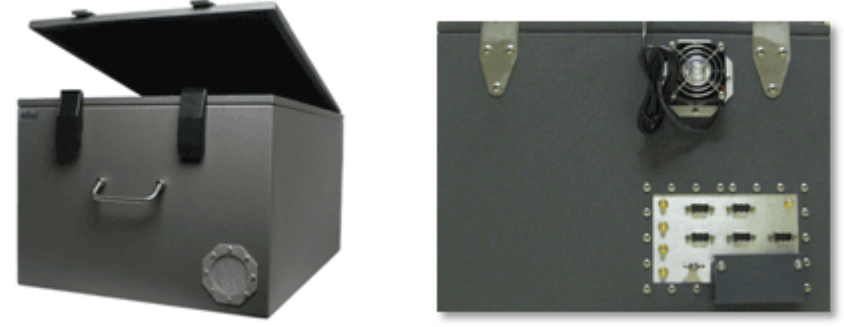
Physical Dimensions

Product or Kit	Internal Dimensions <i>Per Chamber</i>	External Dimensions <i>Per Chamber</i>
WCH1000	10"H x 7 "W x 13 "D	11"H x 8 "W x 14 "D
WCH1100	11"H x 16"W x 23"D	12"H x 17"W x 24"D
WCH2000	10.5"H x 7.125"W x 16.8"D	11.7"H x 8.325"W x 18"D
WCH2100	10.5"H x 7.125"W x 16.8"D	11.7"H x 16.65"W x 18"D
WCH3600-S	11"H x 16"W x 23"D	12"H x 17"W x 24"D
WCH3600-T	11"H x 16"W x 23"D	12"H x 17"W x 24"D

WCH1000



WCH1100



WCH2000



WCH3600

